

Research on Erhu Performing Art Promotion Based on the Unification of Technology and Emotion

Meng Bo

Yunnan Minzu University, Kunming, Yunnan, 650504, China

Keywords: Erhu, Playing technique; Emotion

Abstract: Erhu, as a folk art, brings people not only visual and auditory touches, but also emotional touches. In order to produce emotional resonance with the audience in the performance process, Erhu performers need to integrate technology and emotion, so as to enable listeners to feel the emotions in Erhu performance. The perfect performance of Hu's performance requires the performers to have solid basic skills and skillful performing techniques, and at the same time to deeply understand the essence of the music and the emotions it contains. If in the Erhu performance, too much emphasis on technology, focus on the sound construction, then the emotions played by Erhu are difficult to highlight. Exquisite technology is like the skeleton of the human body, which can connect feelings together. The two are interdependent and mutually supportive, jointly revealing the ideological connotation of the music and improving the artistic charm of Erhu's performance.

1. Introduction

Music is an auditory image, which is composed of composed sounds to further express people's thoughts, feelings and real life. Music is an art form that can move people instantly. Only by paying attention to skills and putting emotions into practice, can music be better released [1]. Due to Erhu's short time of professional and systematic development, some learners' technical ability is limited. With the increasing technical difficulty of modern Erhu's works, some learners excessively pursue technical training and neglect emotional training. The best way to present art is to have beautiful timbre and deep emotion [2]. If in the Erhu performance, too much emphasis on technology, focus on the sound construction, then the emotions played by Erhu are difficult to highlight [3]. Technology is the premise of completing performance, emotion is the guarantee of enhancing charm, and the fusion of technology and emotion is the key to promoting the development of Erhu performance art [4]. Erhu performance needs to pay attention to the high unity of technology and emotion in Erhu performance, in order to reveal the ideological connotation of the work and enhance the artistic charm of Erhu [5].

In some young Erhu learners, there is an incorrect tendency to over-emphasize the pursuit of technical difficulty, while ignoring the inner emotional understanding of music [6]. Erhu's artistic expression is not directly proportional to their skills. An excellent Erhu player, as soon as he picks up the piano, will have an irresistible impulse in his heart and be enthusiastic to play [7]. And if the Erhu player lacks such enthusiasm, the performance is only a two-handed mechanical movement, and such a performance can not be touched even if the technical level is higher. Exquisite technology is like the skeleton of the human body, which can connect feelings together. They are interdependent and mutually supportive, revealing the ideological connotation of the music, and enhancing the artistic charm of Erhu performance together [8]. Compared with technology, emotional cultivation is embodied in their own cultural quality and artistic accomplishment, which requires long-term accumulation of reserves. The degree of integration of technology and emotion in Erhu performance in China is not enough, and the specific methods of integration are not scientific enough. It is of great practical significance to study the unity of technology and emotion in Erhu performance.

2. Technology and Emotion in Erhu Performance

2.1 Master Erhu Performing Skills Skillfully

If you want to play music perfectly with Erhu, you need to be proficient in a variety of exercises. Players are required to practice various techniques in accordance with the needs of the work, and to accurately and vividly display the music content. In performance, the expression of emotion is the expression of communication with the audience on the stage. Incorporating emotion into the work can achieve the harmonious unity of performance techniques and emotions. Throughout the history of the development of Erhu's art in the past 100 years, Erhu music in different eras, different themes and different regions has different emotional connotations. In the performance of Erhu, it is necessary to master the emotional mood of different music in order to better enhance the artistic charm of Erhu [9]. The melody of music score can not be separated from the support of technology. Without the support of technology, no matter how strong the emotion is, it will be paralyzed. The changeable playing techniques show the music language vividly and vividly, making the music image more concrete. And it makes the auditory art reach a certain height, and improves the audience's interest in music appreciation.

All kinds of techniques should be combined organically according to the needs of the works in order to accurately and vividly express the music content. Fully understanding the main characteristics of Erhu performance is very important for understanding the development and characteristics of music. The process of implementing this function is shown in Figure 1.

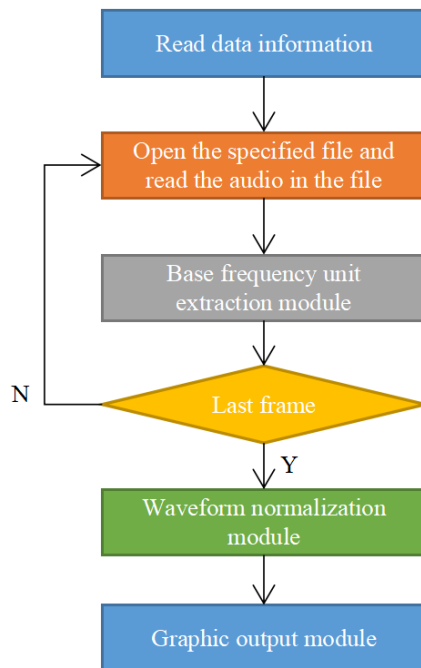


Fig. 1 Extraction of pitch time feature of Erhu performance

2.2 Improving the Creative Ability of Erhu Performance

China has a vast territory. Different regions will produce different musical styles. Music works in different regions also have different emotional expressions. Traditional Erhu's works are mainly spread among the people, reflecting the living conditions of the times. The tunes are not very ups and downs, and they are singing. In Erhu performance, emotional expression is an important measure of the success of performance. Good performance can not be separated from emotions. Only in this way can we arouse the resonance between the listener and the performer. People have different emotional needs for different musical performances, and Erhu performance can only truly embody its charm by combining technology and emotion. Therefore, Erhu's playing skills also require bold innovation and reform. Emotion gives music unlimited vitality. If there is no emotion in place, pure technology is like mechanical performance. The playing skills can't be separated from the performance content, but they are organically combined. The performer should analyze the

theme, understand the author's desire to express the emotion, and fully exert the emotion.

3. The Method of Realizing the Unification of Technology and Emotion in Erhu Performance

3.1 Improving the Ability of Mining and Using Emotional Information

Music is the product of the times, so it contains a strong flavor of the times. Playing is not to consider which note or skill, but to integrate all your energies, thoughts and feelings into the expressed music, so as to make the performance naturally reveal in the prescribed situation and feelings as far as possible. For Erhu's performance, there is no knowledge of pitch, rhythm and strength changes and superb playing skills. No more touching music, no more elegant melody, is helpless. If we can seriously taste the notes in the music, we can appreciate the author's emotional appeal. In playing, you should have such an experience. When you play, you don't consider which note or technique, but let all your energy and thoughts and emotions blend into the music you express [10]. Improving the ability to mine and use emotional information is the key to enhancing the appeal of Erhu's performance. In order to be an excellent Erhu player, you need to master the playing style in different regions. Use the playing skills to blend the two together. Let the audience understand the traditional art culture of our country, and then promote the development of Erhu art in China.

3.2 Fostering Emotion with Performing Techniques

In order to ensure the performance effect, performers need to integrate technology with the theme of their works. Through the creation background of the work and the author's personal experience, this paper analyses the emotions to be expressed in the work. Integrate their own feelings with the emotions of the works, so as to improve the performance effect. In the analysis of the melody in the music score, the support of technology is indispensable. At the same time, technology is also needed to reflect the melody and emotion of the whole music. Ultimately, technology is integrated into emotions and presented through voice. How to use performance technology to assist emotional expression is directly related to the performer's performance on the stage. It is necessary to repeatedly contact specific notes or basic skills in daily practice to make practice perfect. At the same time, we must learn to freely transform and adjust between different technical techniques to better interpret the emotional connotation of different music. In a piece of music with a lot of emotional fluctuations, only the performance of emotions is often not enough. To express emotions with technology can often achieve unexpected results. Therefore, the player should enhance his technical proficiency and improve his ability to express emotions with technology, thus achieving the natural unity of technology and emotion.

When the speed is speeding up, you should concentrate on the rhythm and use your rhythm to control your fingers and bows so that the right and left hands can be coordinated. Table 1 shows the difference between music data and traditional data.

Table 1 Differences between music data and traditional data

Data source	Capacity	Types	Organization	Quality
Traditional data	Compression	Dispersed	Orderly, organized	Clear
Audio data	Very large	Continuously	Disordered, unorganized	Noisy

Using the techniques of pitch, rhythm and strength and weakness of Erhu's performance, the audience is presented with a gripping atmosphere. Expressing the artistic conception of the scene, further transforming the moving music and elegant melody. It is necessary to understand the emotional content of different technical techniques, especially the dexterity of the left-handed fingers, the frequency of the strings, and the degree of sounding. The main characteristics of these accompaniment types are to show the rhythm and drive of music, so that music can continuously get the impetus to move forward. In a certain music environment, accompaniment sound pattern

also has the function of describing artistic conception and rendering atmosphere. Before performing a piece, the performer can fully understand the background of the time when the author wrote the piece and deeply comprehend the author's thoughts by consulting appropriate materials. Seriously understand the author's emotions, and resonate with the author's soul.

4. Conclusion

Erhu's works are more diversified, and the integration of playing techniques and emotions plays an important role in the whole Erhu's performing art. When learning music, performers should grasp the training of skills and emotions, master the learning methods, and train their works effectively. In Erhu performing arts, the integration of technology and emotion has always been a difficult problem for many Erhu performers. In the process of using Erhu to deduce music, performers may face a complex emotional world full of contradictions. A good performance requires a performer's solid basic skills, good performance skills and emotional integration. In the performance process, only the combination of emotions and skills can show good performance. With a certain level of skill, the emotions are integrated into the performance, so that the music is presented to the audience from the inside out. Players must not only have solid basic skills and skillful playing techniques, but also need to have profound knowledge, great sensibility and expressiveness. Let this ancient Chinese traditional folk instrument be more abundant, more vivid, and more artistically pleasing through the skills and ideas of the performers.

References

- [1] Coutinho E, Scherer K R. The effect of context and audio-visual modality on emotions elicited by a musical performance[J]. *Psychology of Music*, 2016, 45(4):550-569.
- [2] Laukka P, Eerola T, Thingujam N S, et al. Universal and culture-specific factors in the recognition and performance of musical affect expressions.[J]. *Emotion*, 2013, 13(3):434-449.
- [3] Edelman L L, Harring K E. Music and Social Bonding: The Role of Non-Diegetic Music and Synchrony on Perceptions of Videotaped Walkers[J]. *Current Psychology*, 2015, 34(4):613-620.
- [4] Holyfield L, Cobb M, Murray K, et al. Musical Ties That Bind: Nostalgia, Affect, and Heritage in Festival Narratives[J]. *Symbolic Interaction*, 2013, 36(4):457-477.
- [5] Juslin P N, Sloboda J A. 15 - Music and Emotion[J]. *Psychology of Music*, 2013, 29(3):583-645.
- [6] Tichon J G, Wallis G, Riek S, et al. Physiological measurement of anxiety to evaluate performance in simulation training[J]. *Cognition, Technology & Work*, 2014, 16(2):203-210.
- [7] Yang B, Kim Y, Yoo C. The integrated mobile advertising model: The effects of technology- and emotion-based evaluations[J]. *Journal of Business Research*, 2013, 66(9):1345-1352.
- [8] Coutinho E, Dibben N. Psychoacoustic cues to emotion in speech prosody and music[J]. *Cognition & Emotion*, 2013, 27(4):658-684.
- [9] Bhatti A M, Majid M, Anwar S M, et al. Human emotion recognition and analysis in response to audio music using brain signals[J]. *Computers in Human Behavior*, 2016, 65(C):267-275.
- [10] Aubé, William, Peretz I, Armony J L. The effects of emotion on memory for music and vocalisations[J]. *Memory*, 2013, 21(8):981-990.